



**REGIONAL SPECIALISED METEOROLOGICAL CENTRE-TROPICAL CYCLONES, NEW DELHI
TROPICAL WEATHER OUTLOOK**

DEMS-RSMC TROPICAL CYCLONES NEW DELHI DATED 06.12.2024

TROPICAL WEATHER OUTLOOK FOR THE NORTH INDIAN OCEAN (THE BAY OF BENGAL AND THE ARABIAN SEA) VALID FOR THE NEXT 168 HOURS ISSUED AT 0600 UTC OF 06.12.2024 BASED ON 0300 UTC OF 06.12.2024.

BAY OF BENGAL:

A fresh cyclonic circulation lay over Equatorial Indian Ocean & adjoining southeast Bay of Bengal at 0300 UTC of today, 6th December, 2024 and extending up to 3.1 km above mean sea level. Under its influence, a Low-Pressure Area is likely to form over central parts of south Bay of Bengal around 07th December. The system is likely to move west-northwestwards and reach over southwest Bay of Bengal off Sri-Lanka – Tamil Nadu coasts around 12th December.

Scattered low and medium clouds with embedded intense to very intense convection lay over south Bay of Bengal and Andaman Sea. Scattered low and medium clouds with embedded moderate to intense convection lay over central Bay of Bengal and isolated weak to moderate convection lay over north Bay of Bengal.

***PROBABILITY OF CYCLOGENESIS (FORMATION OF DEPRESSION) DURING NEXT 168 HRS:**

24 HOURS	24-48 HOURS	48-72 HOURS	72-96 HOURS	96-120 HOURS	120-144 HOURS	144-168 HOURS
NIL	NIL	NIL	NIL	NIL	NIL	NIL

***NOTE: EVERY 24HR FORECAST IS VALID UPTO 0300 UTC (0830 IST) OF NEXT DAY**

ARABIAN SEA:

Yesterday's cyclonic circulation over east-central & adjoining southeast Arabian sea lay over southwest & adjoining southeast Arabian sea at 0300 UTC of today, 6th December, 2024 and extending up to 1.5 km above mean sea level.

Scattered low and medium clouds with embedded moderate to intense convection lay over central, adjoining southwest Arabian Sea, Lakshadweep Island Area, Maldives & Comorin Area. Scattered low and medium clouds with embedded isolated weak convection lay over east-central & north Arabian Sea.

***PROBABILITY OF CYCLOGENESIS (FORMATION OF DEPRESSION) DURING NEXT 168 HRS:**

24 HOURS	24-48 HOURS	48-72 HOURS	72-96 HOURS	96-120 HOURS	120-144 HOURS	144-168 HOURS
NIL	NIL	NIL	NIL	NIL	NIL	NIL

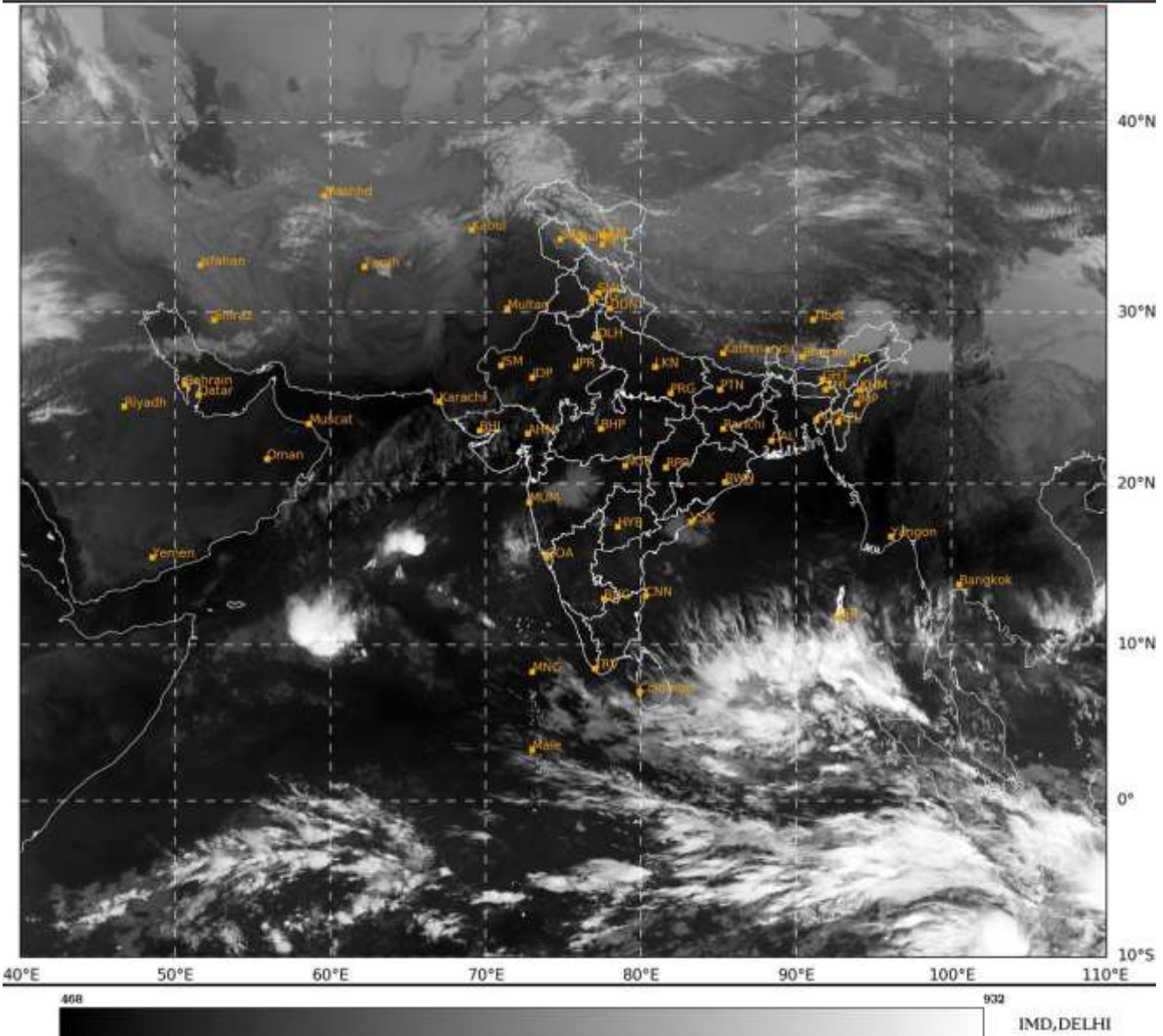
***NOTE: EVERY 24HR FORECAST IS VALID UPTO 0300 UTC (0830 IST) OF NEXT DAY**

REMARKS: NIL

Cloud distribution: (a) Isolated: <25%, Scattered:25-50%, Broken: 51-75%, Solid:>75%, Convection Intensity: (a) Weak: Cloud Top Temperature (CTT) >-25°C, (b) Moderate: CTT: - 25°C to -40°C, (c) Intense: CTT: - 41°C to -70°C and (d) Very Intense: : Less than -70°C
PROBABILITY OF CYCLOGENESIS (FORMATION OF DEPRESSION):NIL: 0%, LOW: 1-33%, , MODERATE: 34-66% AND HIGH: 67-100%
This is a guidance Bulletin for WMO/ESCAP Panel Member countries. Visit respective National websites for Country specific Bulletins

SAT : INSAT-3DR IMG
IMG_TIR2 12.0 um
LIC Mercator

06-12-2024/(0415 to 0442) GMT
06-12-2024/(0945 to 1012) IST



Cloud distribution: (a) Isolated: <25%, Scattered:25-50%, Broken: 51-75%, Solid:>75%, Convection Intensity: (a) Weak: Cloud Top Temperature (CTT) >-25°C, (b) Moderate: CTT: - 25°C to -40°C, (c) Intense: CTT: - 41°C to -70°C and (d) Very Intense: : Less than -70°C
PROBABILITY OF CYCLOGENESIS (FORMATION OF DEPRESSION):NIL: 0%, LOW: 1-33%, , MODERATE: 34-66% AND HIGH: 67-100%
This is a guidance Bulletin for WMO/ESCAP Panel Member countries. Visit respective National websites for Country specific Bulletins